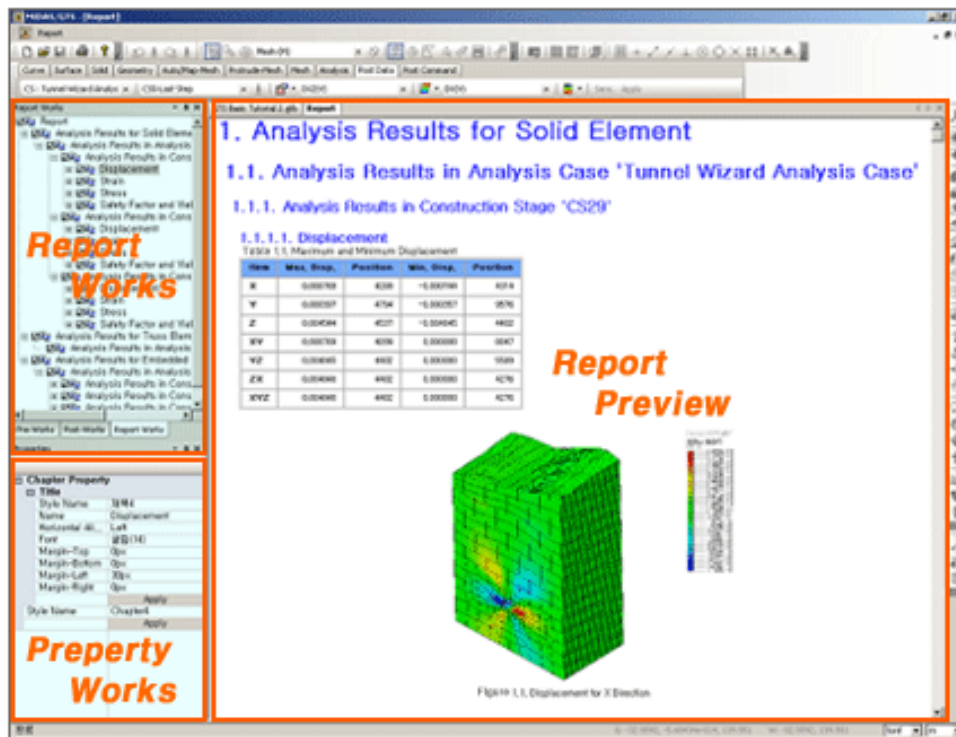


Report Preview Overview

MIDAS/GTS provides a Report Summary function, which allows the user to conveniently prepare a report based on the model information and analysis results. Using the Report Summary function, the user can produce a report selectively from the desired elements, analysis type, images by construction stages or analysis results.

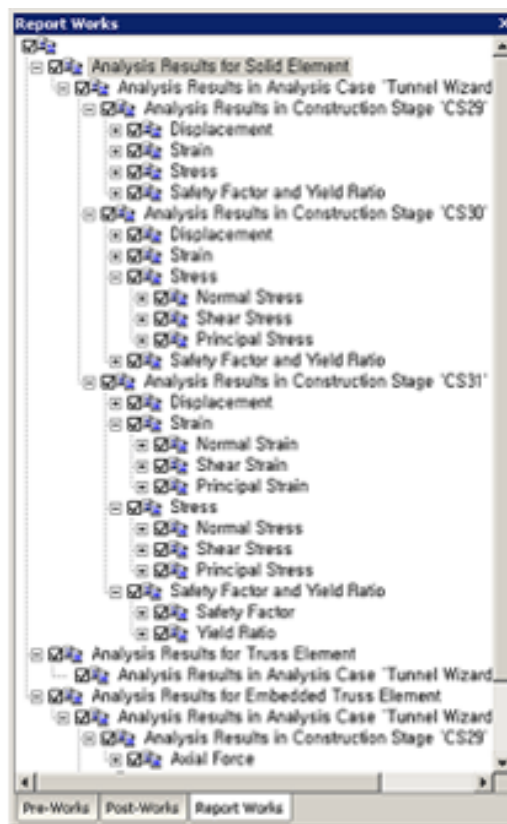
Furthermore, the report materials can be produced in xml and html files so that the materials can be checked in a desired application such as Internet Explorer, MS-Word, MS-Excel, etc.



<Make-up of the base screen for Report Summary>

Report Preview Report Works

The contents of a report generated from the Report Summary function of MIDAS/GTS are listed in a Tree format, which can be conveniently checked. Also we can select or delete the output items to easily arrange the contents of the report.



<Selection of analysis results using Report Works>

Report Preview
Property Window

MIDAS/GTS provides various Property Windows to define the properties of a report. Using the Property functions, the user is able to freely define the format and contents of the report corresponding to each category.

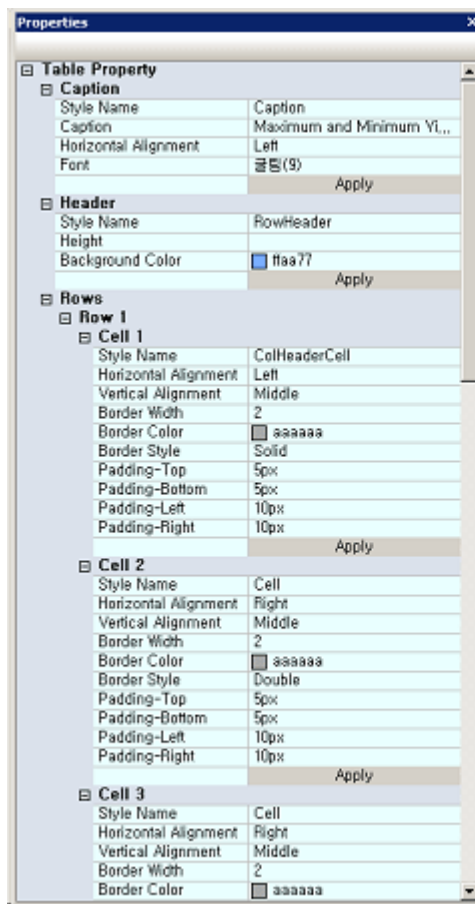
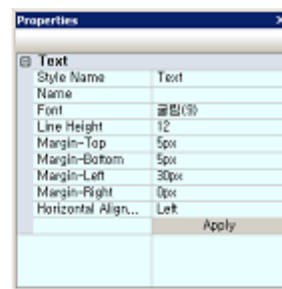
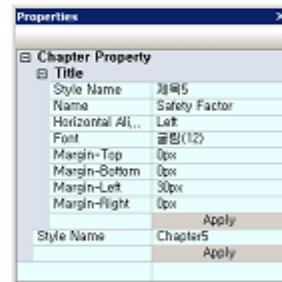


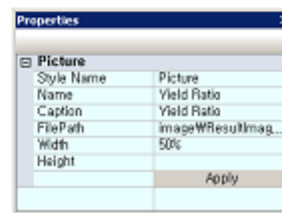
Table Property



Text Property



Chapter Property

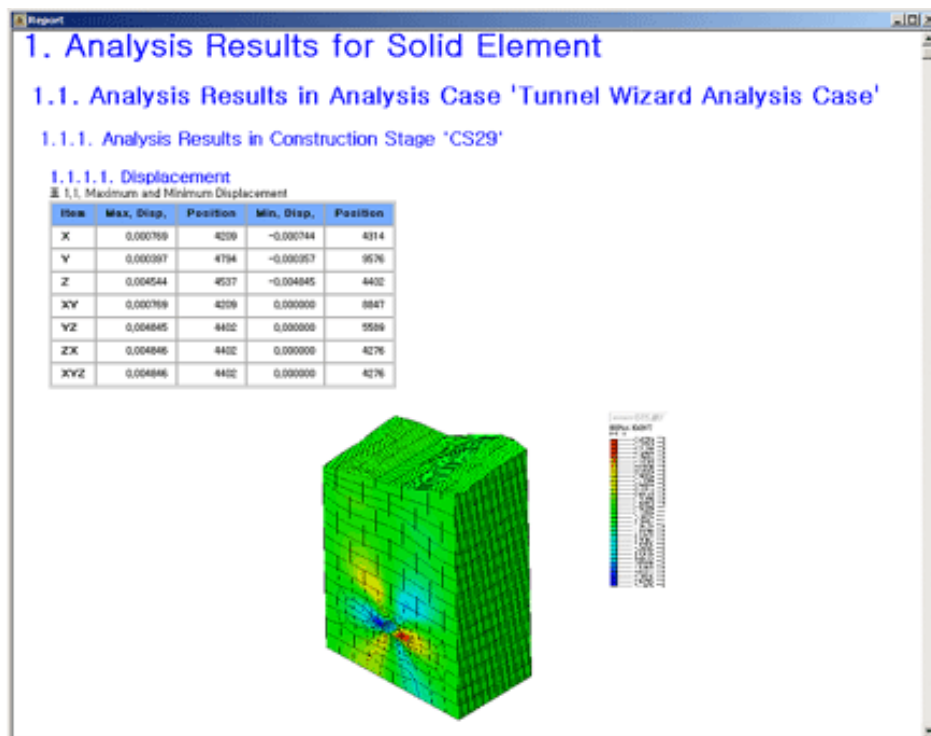


Picture Property

<Property dialog boxes for defining the properties of a report>

Report Preview
Report View

The contents of a report prepared using the Works Tree and Property functions can be previewed in the html format.

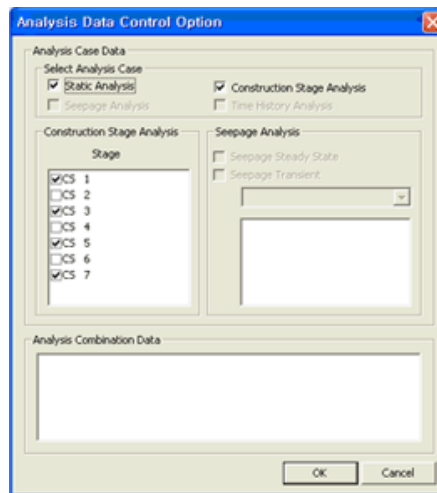


<Report View of Report Summary>

Report Preview Report Summary Functionality

1. Analysis Data Control Option

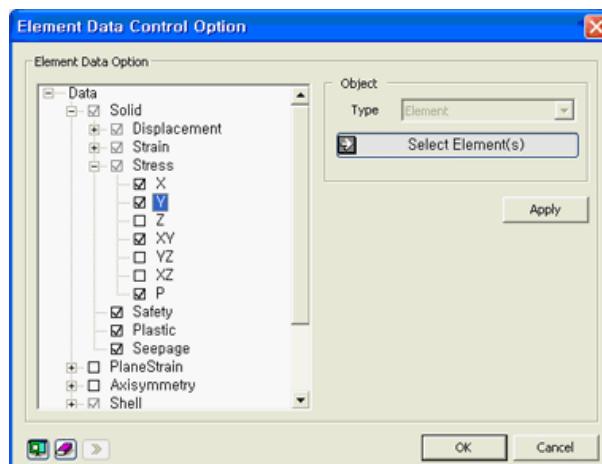
The type of analysis, construction stages, analysis combination data, etc. for preparing a report can be selected.



<Report View of Report Summary>

2. Element Data Control Option

The options for the element types and the components of each element type for output generation are selected. We can also select those elements and nodes, which we desire, to be included in the report.

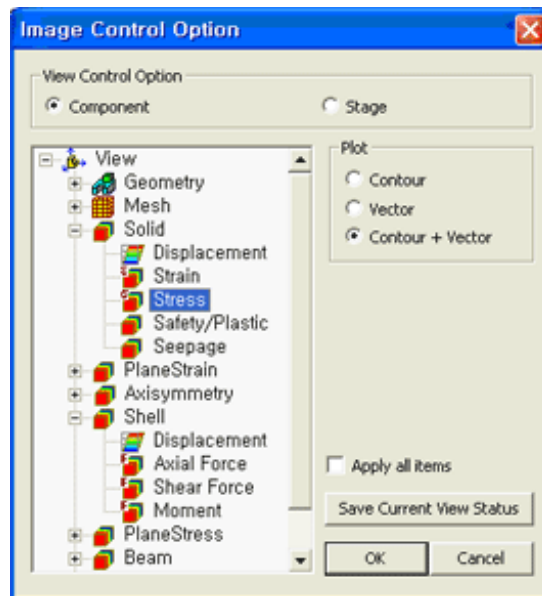


<Report View of Report Summary>

3. Image View Control Option

The Component option produces the output of analysis results for each element type by construction stages based on the status of View defined by the user. This option is very convenient if a report is to contain the analysis results in the form of Displacement, Strain, Stress, etc. for each element type.

The Stage option selects View for each construction stage for the analysis results to be contained in a report. Graphics for construction stage results are produced on the basis of the user defined View.



<Report View of Report Summary>